

# LOGIC SERVICES

EC4786



ELECTRICAL INSTRUMENTATION SPECIALISTS

# LOGIC SERVICES

EC4786

## Table of Contents

Corporate Profile .....	1
Project Experience .....	2
Capabilities .....	3
Construction .....	4
Water Industry .....	5
Commissioning .....	6
EEHA: Hazardous Inspection and Installation .....	7
Mechanical-Electrical Services .....	8
Corporate Philosophy .....	9

Members of:



# Corporate Profile: Overview

LOGIC Services is a 100% Australian owned company, specialising in electrical and instrumentation projects for the Oil and Gas, Mining and Heavy Industry sectors, both Australia wide and internationally.

Our core capabilities include Construction, Commissioning and EEHA Installation and Inspection. We offer complete project management utilising a Completions Management System to promote efficient outcomes of project deliverables.

With almost 100 years combined experience, the Directors of LOGIC Services have the necessary skills, qualifications and industry knowledge to undertake an extensive range of projects in any location worldwide. This experience, combined with the team's access to qualified labour resources from a variety of global locations, enables LOGIC Services to offer clients effective, timely and efficient implementation of any sized project.

LOGIC Services is your first choice for quality assured and safety orientated workmanship.



## Our Divisions

- Construction
- Commissioning
- EEHA Inspections
- Mechanical-Electrical Instrumentation

## Our Markets

- Energy
  - Power Generation
  - Transmission and Distribution Networks
  - Pre-Commissioning and Commissioning
  - HV and LV Installations

### Resources

- Mining
- Oil and Gas
- Water

### Heavy Industry

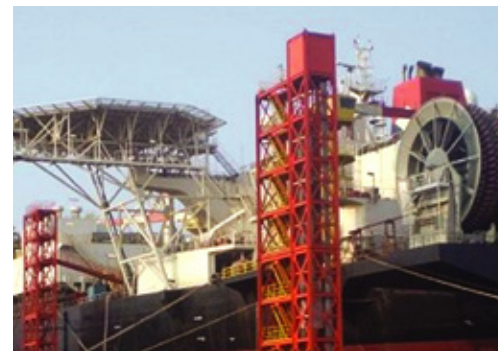
- Construction
- Building Services
- Conveyors
- Communications and Fibre Optics

# Project Experience

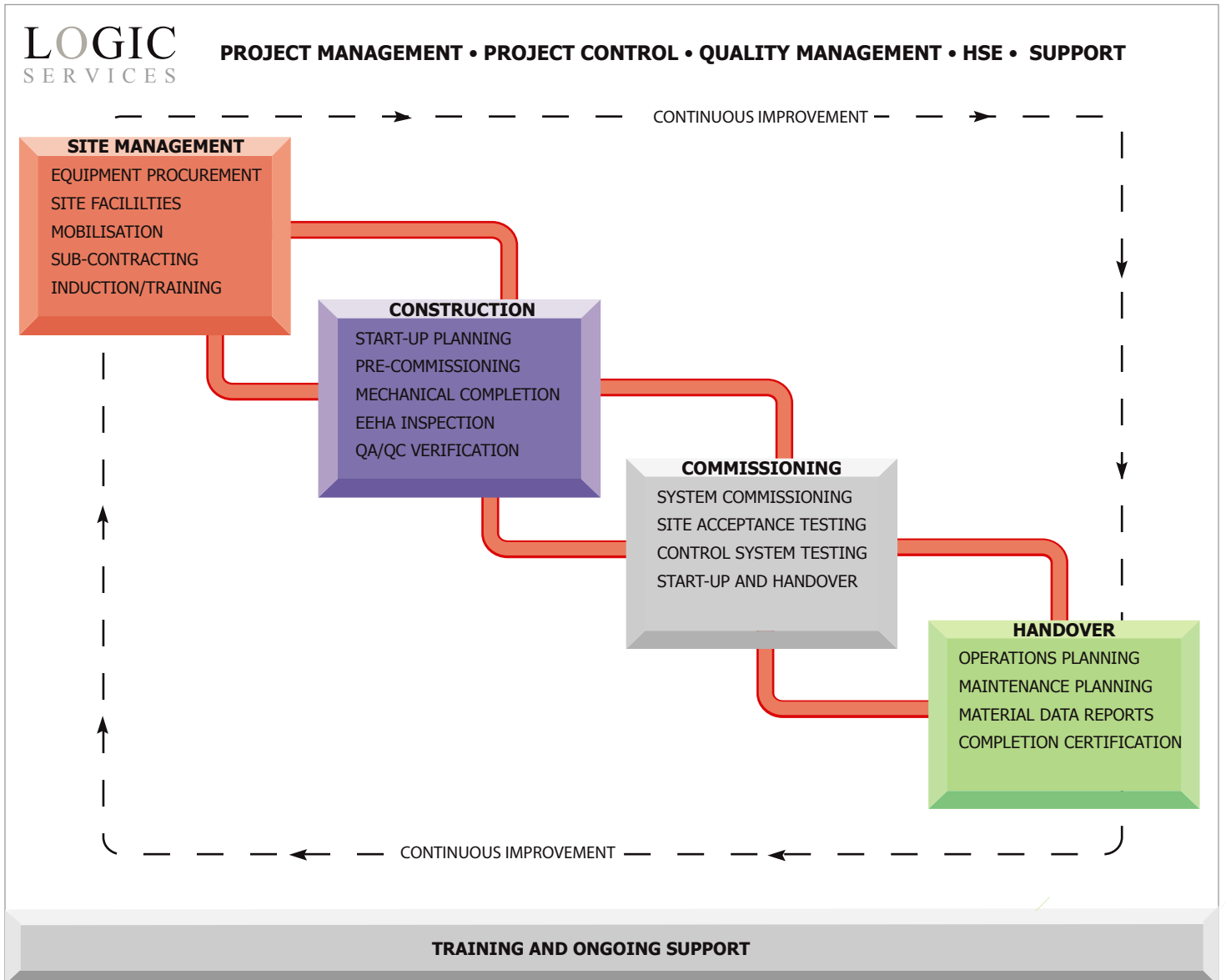
## LOGIC SERVICES - MANAGEMENT TEAM

### OVERALL PROJECT EXPERIENCE

CLIENT/PROJECT	ROLE/SCOPE OF WORK
<b>Woodman Point Waste Water Treatment Plant, Western Australia</b>	LOGIC Services were tasked to undertake LV Electrical Installation and HV Electrical installation as part of an upgrade project.
<b>Kwinana Waste Water Treatment Plant, Western Australia</b>	LOGIC Services were tasked to undertake the entire Electrical & Instrumentation Installation.
<b>Saipem (Australia) Black Tip Project</b>	EEHA inspection on both the offshore & onshore section of the project.
<b>Eilbeck Cranes - Woodside Pluto Project, Australia</b>	Electrical installation of seven overhead cranes in Hazardous Area Environments.
<b>Montara Tanker Pacific Project, Singapore</b>	Turbine Commissioning.
<b>STP&amp;I and Sino Thai - Pluto Project, Thailand</b>	EEHA Inspection.
<b>MODEC - BHP Pyrenees Project, Qingdao, China</b>	EEHA Inspection work and dossier compilation for FPSO. Commissioning: Offshore, Exmouth WA
<b>McConnell Dowell - DBNGP, Western Australia (Dampier-Bunbury Natural Gas Pipeline)</b>	Electrical/instrumentation work on the DBNGP Stage 5B Gas Pipeline Loop upgrade.
<b>Aker Solutions, Western Australia</b>	Installation & Commissioning of subsea hydraulic skids for Cossack and MODEC, Brasil.
<b>Shell/(SEIC) Sakhalin Energy Investment Company, (OPF) Onshore Production Facility (Sakhalin Island), Russia</b>	Senior Commissioning Personnel/QA/QC/EEHA Inspector. Authorised Electrical Person.
<b>SNEPCO (Shell) Nigeria, Bonga FPSO Vessel, West Africa</b>	Senior Electrical Commissioning Personnel and EEHA Inspection. Authorised Electrical Person.
<b>Shell &amp; Halliburton KBR, Malampaya Deep Water Gas to Power Project, Philippines</b>	Electrical Commissioning Personnel. Authorised Electrical Person.
<b>Vanguard, Four Vanguard FPSO, NW Australia</b>	Electrical Commissioning / Maintenance Personnel.



# Capabilities



## Project Management

- Established Strategic Partnerships and Alliances
- Local Contracting Plan
- Integrated Management System for Completions (IMSC)
- Safety Planning & Implementation
- Logistics

## Construction

- Mech-Elec Alliances
- Construction Management
- Interface
- Safety Management On-Site
- Logistic and Material Control
- Mechanical Completion
- Practical Completion
- QA/QC Verification
- Material Data Report (MDR)

## Testing, Commissioning, Start-up & Handover

- Pre-commissioning
- Instrumentation (cabling, installation, calibration and testing)
- Switchgear and Control Systems
- Power Generation
- Commissioning Support
- Handover and Exporting of Data
- Start-up Support
- Material Procurement

## EEHA Inspection & Installation

- Complete Hazardous Area Inspection
- Documentation and Dossier Compilation
- As Built Drawings and Layouts
- Datasheets
- Certificates of Conformity
- Hazardous Area Layout Drawings
- Complete Tag Database
- Ongoing Statutory Inspections
- Repair Work
- Material Procurement

# Construction

The construction division is focused on providing services to the Oil and Gas, Mining and Heavy Industry sectors. The interface and effective communication between disciplines is imperative, and LOGIC Services pride themselves in being able to effectively manage communication across a range of trade services.



- Instrumentation - Cabling, Installation, Calibration and Testing
- High and Low Voltage Cable Installation and Distribution
- Switchgear and Control Systems
- Power Generation Installation
- Water Services
- Communication Services

- Board Manufacturing
- Substation Installation
- Lighting and Power
- Transportables
- Pipelines
- Switch Yards
- Security Systems

## NICHE FOCUS AREAS

### CONSTRUCTION

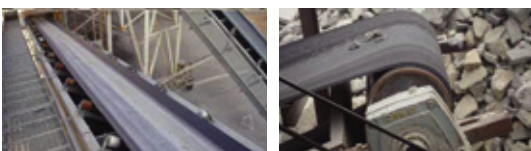
#### TECHNICAL GRAPHICS



#### ROLE/SCOPE OF WORK

- Simplified P & IDs
- Process Schematics
- Deck Plans
- Emergency Response Plans

#### CONVEYORS



Conveyor systems: motor installation, trip switches, variable speed/frequency drives, control room and switch rooms that are relative to this specialised sector, we have the capabilities to provide quick, efficient and reliable installation and commissioning works for our clients.

#### OIL & GAS



Electrical and Instrumentation Installation, Inspection and Commissioning:

- FSPOs
- Rigs
- Platforms
- Onshore Facilities

# Water Industry

LOGIC Services and our personnel have worked on many water treatment plants for the Water Corporation at the following sites: Woodman Point, Kwinana, Subiaco, Halls Head, Beenyup and Caddadup.

The scope of work entailed all the installation and commissioning work including the HV installation, Transformers, Switchrooms, MCCs, Distribution Boards, VSDs, Motor Drives, Control stations, Profibus, Coaxial, Fibre Optic works, Earthing Works, Lighting and Small Power.

Our clients have consistently informed us of their satisfaction and we look forward to completing more upcoming projects in this ever expanding industry.

## Our Expertise

- Fire protection system installation
- Security System installation
- HV and LV installations
- Communication
- Fibre Optic installations



## WATER PROJECTS - WORK HISTORY

### Client/Project Overview

#### Woodman Point Waste Water Treatment Plant - W2W Alliance

Sludge Amplification - Stage 1

Dissolved Air Floatation (DAFS) - Stage 1

STA - HV Electrical Installation, Testing & Commissioning

STA - LV Electrical Installation Testing & Commissioning

Dewatering Facility

#### Kwinana Waste Water Treatment Plant - Client: Sunset Coast Water Alliance

LOGIC Services were tasked to undertake entire Electrical & Instrumentation installation.

Project successfully completed in August 2009

## LOGIC SERVICES MANAGEMENT TEAM - PAST EXPERIENCE

#### Nicholson Road Pumping Station (2007) - Client: Water Corp

Tasked to manage entire HV & LV Electrical & Instrumentation installation.

#### Samson Brook Water Treatment Plant (Waroona 2006 -2007) - Client: Leighton Construction

Tasked to manage entire Electrical & Instrumentation installation.

#### Subiaco Waste Water Treatment Plant (Perth 2006) - Client: John Holland

Tasked to manage entire Electrical & Instrumentation installation.

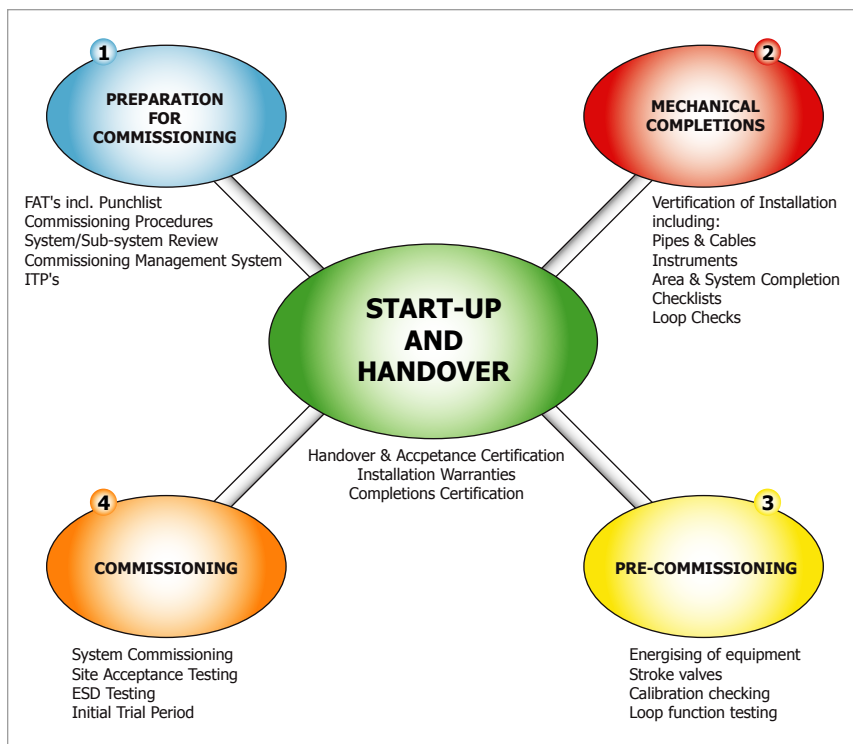
# Commissioning

Drawing upon years of experience within the oil and gas industry, our commissioning capabilities extends across all areas of electrical instrumentation and power systems, providing pre-commissioning, commissioning and inspection of all classifications of equipment.

LOGIC Services commissioning philosophy revolves around our experienced personnel. Having undertaken a range of lead commissioning roles within power systems generation and distribution, process and utilities plants on both onshore and offshore installations, we offer an unrivalled assurance of quality to our clients.

## Our Expertise

- Flawless Start Up
- Power Generation and Distribution, Installation and Commissioning
- MCC Installation and Commissioning
- UPS Systems
- Interfacing with DCS, PLC and ESD Systems
- Offshore Utilities
- Process Commissioning
- Function Testing & Energising Equipment



From the outset of any project, our commissioning personnel can provide the complete commissioning package for the operator, ensuring that both client and project goals are achieved.

Commencing with a comprehensive development and review of commissioning procedures, training, ITP's, FAT's, punchlists and CMS, our personnel can manage the preparation for commissioning and the process to be commissioned, thereby identifying any critical path objectives and of course the experienced personnel required.

Throughout each stage (as shown), LOGIC Services can drive the commissioning process efficiently and cost effectively to a successful Start-Up and Handover.

Our commissioning personnel thrive in a project driven environment. Having fulfilled a number of key positions for major operators in various locations in Australia and around the world, clients can feel confident in the hands-on expertise LOGIC Services can bring to any project.

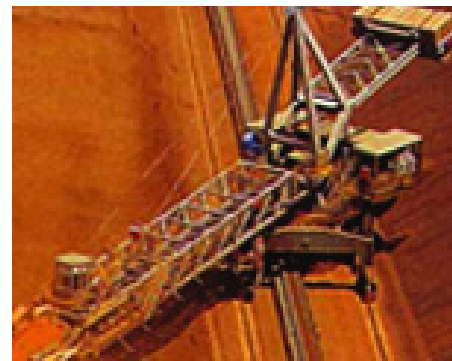
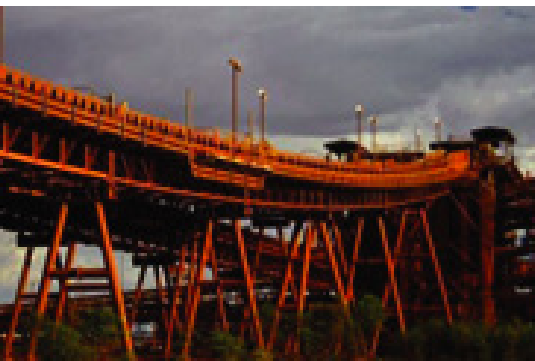


# Mechanical-Electrical Services

LOGIC Services personnel have worked in alliance with a number of Mechanical Service companies. The goal of these partnerships is to minimise disruption on projects by working closely with personnel, and making the work place as safe and productive as possible.

LOGIC Services personnel have worked on upgrades and installations of new and operational Conveyors, Port Facilities, Mining Operations, Refineries and Water Treatment Plants.

Working in conjunction with our alliances, LOGIC Services can provide mechanical and electrical installation of any sized conveyor in any terrain.



The combination of the required trades under a single contractual responsibility shall provide not only cost savings, but also benefits to our clients in the areas of:

- Single point contact (Sole Project Manager)
- Sharing of plant & equipment
- Sharing facilities
- One Safety Officer
- One Construction program for both Mechanical & Electrical disciplines
- Cooperation and coordination of day-to-day work
- Planning and scheduling of work
- Sharing of multiple trade personnel
- Increased communication ensures no lost time/claims.

The above shall provide financial benefits and a more efficient Project delivery.

# Corporate Philosophy

## A Focus on Quality

LOGIC Services is committed to delivering on quality, with a focus on continuous improvement, efficiency, teamwork, communication, safety and innovation. Our Quality Management System guides our organisational values.

## Hands-on Approach

The Directors of LOGIC Services form the corporate management team and this provides our clients with direct access to decision-makers. We believe this minimal chain of command improves the efficient outcomes of projects and minimises costs, and these cost savings are passed on to our clients.

The extensive experience of our management team, with a hands-on approach, allows our team to identify issues as soon as they develop. This benefits our clients through delivery of projects on-time and on-budget.

## Industry Partnerships

Our focus on efficiency includes reducing costs for the client. Strategic partnerships have been formed to ensure that LOGIC Services can cater to the varied needs and client requests in any situation. These existing relationships ensure that teams of different disciplines work together on projects and this improves the timeframe in which projects can be completed.

## Our Values

We base our business model on a teamwork and inclusive approach to reflect our NO QUITTS philosophy. Our Directors are our management team and these principles guide our employees and the delivery of our products and services.

### N: Never Say Never

We pride ourselves in having innovation and using this philosophy of "Never Say Never", inspires and motivates our employees to find solutions to problems, and instils the essence of teamwork within each project that we are a part of.

### O: Opportunity

We believe there is always an opportunity to learn, develop ideas and to embrace the cycle of continuous improvement for the benefit of both our company and our clients.

### Q: Quality

In all industries safety is critical and this will remain a key driver for all operators and their respective projects. Therefore, quality of workmanship and attention to detail is paramount.

### U: Understanding

From mutual understanding develops trust and this improves the way we are able to provide our clients with the service that they need. Being able to understand the goals and objectives of our clients ensures that we are able to meet and exceed expectations.

### I: Integrity

Professional standards, ethics and training guide the delivery of our quality products and the ability to provide quality services to our clients.

### T: Teamwork

Being able to provide a united team improves productivity, and being able to liaise and communicate effectively across divisions, between contractors and with our clients, ensures the best outcomes are achieved.

### S: Safety

'Safety First' is our motto and is a priority for our organisation. We do not compromise on safety. This forms the last component of our corporate motto as a reminder that safety should always be considered a key concern.

# LOGIC SERVICES

EC4786



LOGIC Services Pty Ltd  
PO Box 272  
Karrinyup  
WA 6921

Ph: 1300 330 199  
Fax: 1300 617 765

Email [info@logicservices.com.au](mailto:info@logicservices.com.au)  
[www.logicservices.com.au](http://www.logicservices.com.au)